



PER MONTH

£1,850 Per Month

Globe Road

London, E2 0LW

Located just a few moments from Bethnal Green Underground Station is the 1 bedroom apartment set within a modern development.

The property is located on the 2nd floor and features a bright reception room with seating and dining. There is a fitted kitchen and bathroom with shower cubical and a good size double bedroom with built in wardrobes.

Victoria Park Village, Broadway Market and Brick Lane are all within walking distance with great transport links including Bethnal Green Station which is just a few moments walk as well as Stepney Green and Whitechapel Underground Stations being close by.

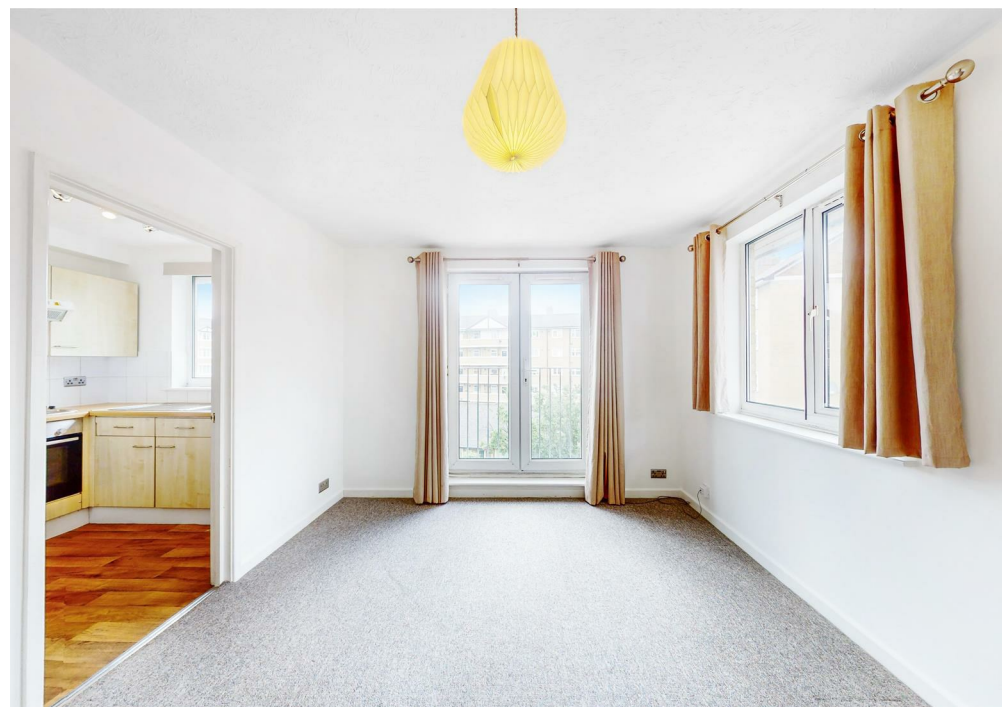
Council Tax: Band C

12 month contract: breakclause subject to offer

5 weeks deposit: £2134

Available Start of September

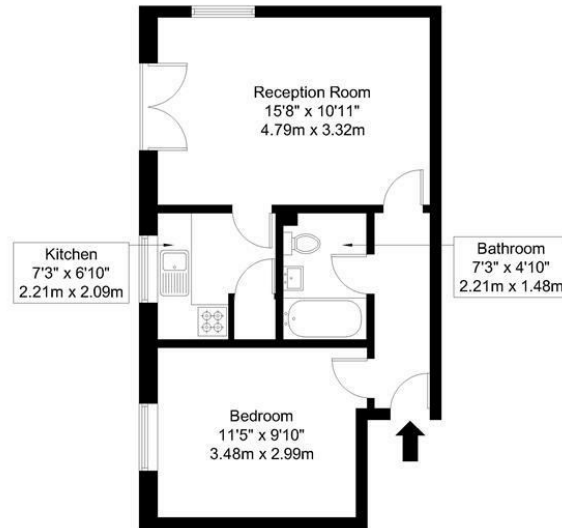
unfurnished





Globe Road, E2 0LW

Approx Gross Internal Area = 40 sq m / 431 sq ft



Second Floor

Ref:

Copyright **BLEU
PLAN**

The Floor plan is not to scale and measurements and areas shown are approximate and therefore should be used for illustrative purposes only. The plan has been prepared in accordance with the RICS code of Measuring Practice and whilst we have confidence in the information produced it must not be relied on. Maximum lengths and widths are represented on the floor plan. If there is any aspect of particular importance, you should carry out or commission your own inspection of the property.

Copyright @ BLEUPLAN

Energy Efficiency Rating		Current	Potential
<i>Very energy efficient - lower running costs</i>			
(92 plus) A			
(81-91) B			
(69-80) C		73	77
(55-68) D			
(39-54) E			
(21-38) F			
(1-20) G			
<i>Not energy efficient - higher running costs</i>			
England & Wales		EU Directive 2002/91/EC	

Agents Note: Whilst every care has been taken to prepare these particulars, they are for guidance purposes only. All measurements are approximate and are for general guidance purposes only and whilst every care has been taken to ensure their accuracy, they should not be relied upon and potential buyers/tenants are advised to recheck the measurements

OFFICE ADDRESS

88 Cheshire Street
London
E2 6EH

OFFICE DETAILS

0207 739 6969
info@peachproperties.com
www.peachproperties.com